



CHIPPER



SPRAYER



MOWER

Green Climber L19300 Pro

MAINTENANCE

**ROADSIDE
FORESTRY
WINTER**

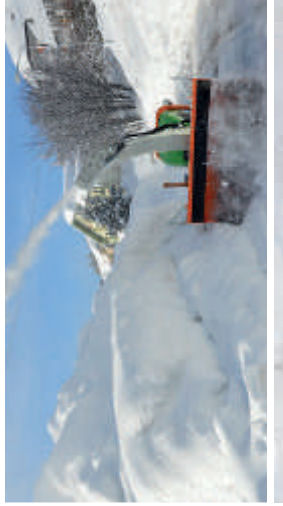


Green Climber
STAGE V ready



Green Climber L1300 Pro

SNOWBLOWER



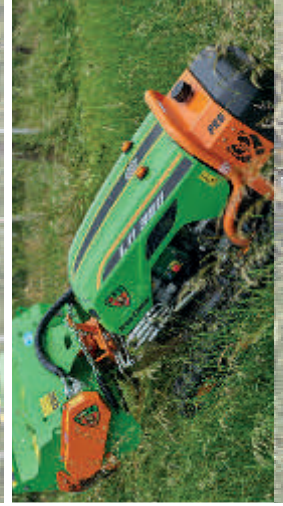
EASILY TRANSPORTABLE



POST MOWER



IT CAN TACKLE STEEP SLOPES UP TO 60° IN ALL DIRECTIONS



MAINTENANCE

ROADSIDE
FORESTRY
WINTER

VERSATILITY

Green Climber is a machine designed to carry out green maintenance along roadsides, particularly on inconvenient or dangerous to reach terrain. Its light weight and versatility make Green Climber extremely useful.

EXTENDABLE TRACKED UNDERCARRIAGE

The extendable undercarriage and its light weight allow the machine to operate on steep slopes up to 60° in all directions.

SAFETY

All machine movements can be carried out with the remote control which has a long range of action up to 150m.

HYDRAULIC SIDE-SHIFTING

The attachment plate has hydraulic side-shifting of a total of 400mm hydraulically + 400mm manually.

QUICK COUPLING SYSTEM

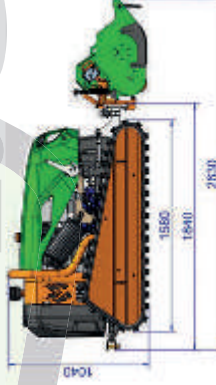
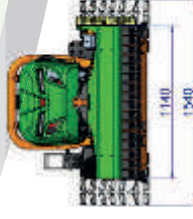
The Green Climber's quick coupling system has been designed to guarantee the interchangeability of attachments extremely fast; it is also equipped with a standard hydraulic multiconnection plate.

TECHNICAL CHARACTERISTICS

DRY WEIGHT WITHOUT ACCESSORY	850 KG
MAX WORKING GRADIENT	60°
SIDE-SHIFTING	YES
SPEED	7 KM/H
DIESEL ENGINE	YANMAR 3 CILINDRI
EPA TIER 4 FINAL - STAGE 5	YES
ENGINE POWER	30.2 @3000 RPM
ENGINE TORQUE	78.9-85.9 NM @1800 RPM
COOLING SYSTEM	LIQUID
FUEL TANK CAPACITY	21 LT
REVERSIBLE RADIATOR FAN	YES
EXTENDABLE UNDERCARRIAGE TRACKS	YES
CUTTING WIDTH	115 CM
SERVICE PUMPS	13 lt @ 180bar
MAIN ACCESSORY LINE	45 ft @ 250bar

RELIABILITY WITH REDUCED MAINTENANCE COSTS

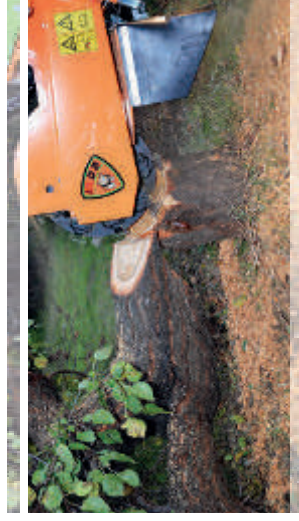
Statistics developed by the German road authorities that use the Green Climber machines state that the MDB machines guarantee greater reliability, and an operating cost 1/3 lower than our competitors (in comparison with machines in the same category).



WIDE RANGE OF ATTACHMENTS



STUMPGRINDER



REMOTE-CONTROLLED

